

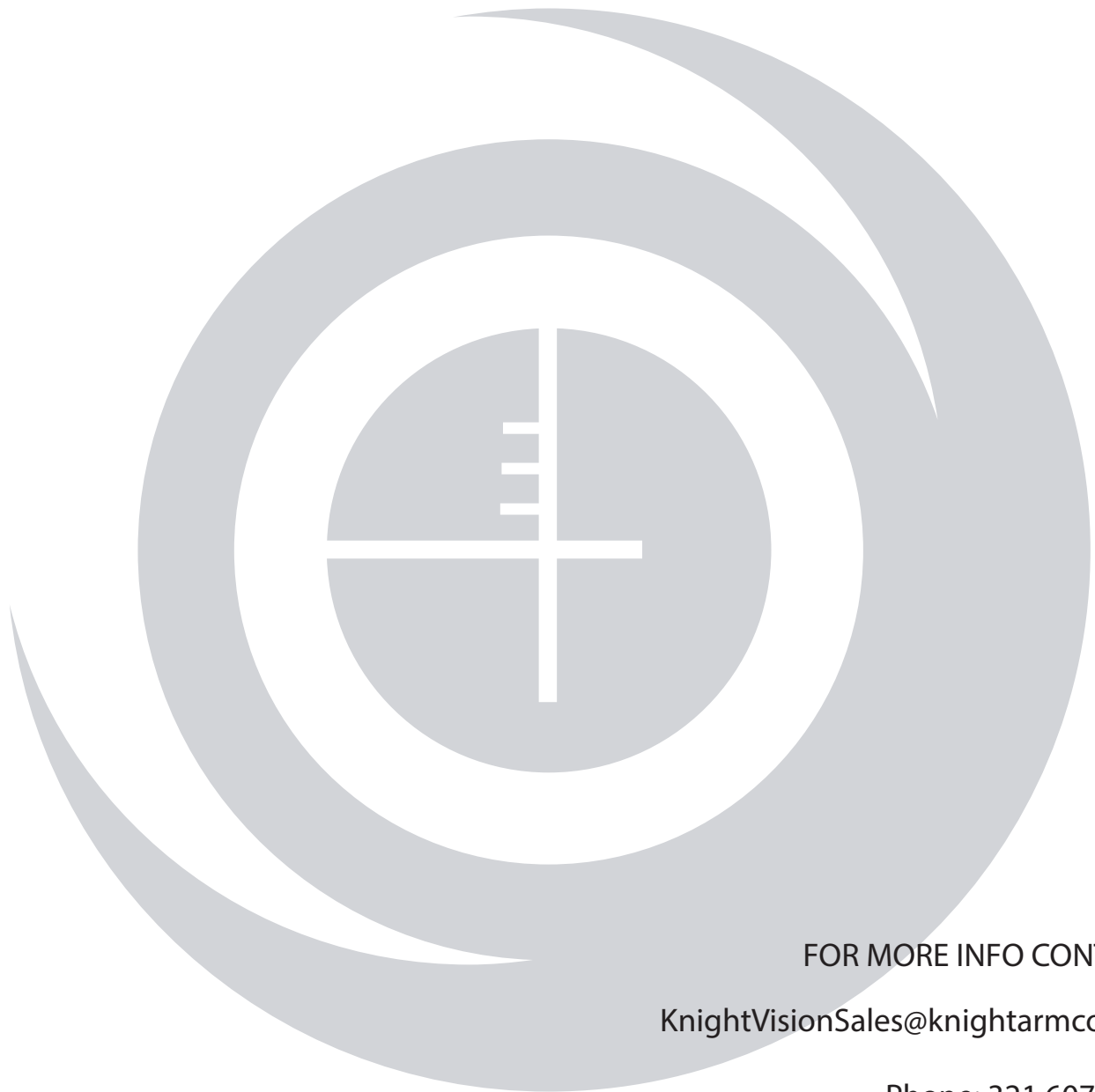


KVC

---

KNIGHT VISION





FOR MORE INFO CONTACT:

[KnightVisionSales@knightarmco.com](mailto:KnightVisionSales@knightarmco.com)

Phone: 321.607.9900

Fax: 321.268.1498

701 Columbia Blvd  
Titusville, Florida 32780

© Knight's Armament Company. Printed and designed in the United States of America. No part of this publication may be reproduced without the prior written consent of Knight's Armament Company. Products are subject to change without notice. Knight's Armament Company is an ISO 9001 Certified Company. The products, product specifications, nomenclature, and availability of all items featured in this document are subject to change at the discretion of Knight's Armament Company. Products may be photographed with optional accessories. Some products are available in other colors.

Export of the commodities described herein is strictly prohibited without a valid export license issued by the applicable Authority of the U.S. Department of State, Directorate of Defense Trade Controls as proscribed in the International Traffic in Arms Regulations (ITAR), Title 22 Code of Federal Regulation, Parts 120-130, or by the U.S. Department of Commerce, Bureau of Industry and Security, Export Administration Regulations, 15 CFR Parts 730-774 (EAR)

EXPORT CONTROL STATEMENT: These item(s) are firearm or defense related goods. Export of the goods described herein is strictly prohibited without a valid export license issued by the applicable Authority by the US Department of State, Directorate of Defense Trade, Controls as proscribed in International Traffic in Arms Regulation (ITAR), CODE OF FEDERAL REGULATIONS, Title 22, Parts 120-130, or by the U.S. Department of Commerce, Bureau of Industry and Security, Export Administration Regulations, 15 CFR Parts 730-774 (EAR) - CAGE Code: 1S002





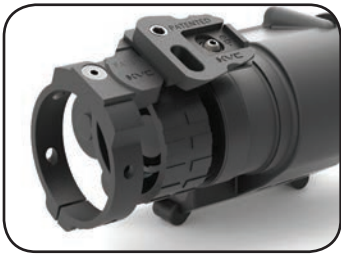




The OSS kit is two-part user level modular upgrade for the PVS-14 format monocular. No modification to the legacy monocular, special tools or training are required for an OSS upgrade which takes minutes.

The OSS upgrade maximizes interface options for virtually any standard dovetail receiver allowing matrix level interchangeability between optics and components. Included in the kit are both a top oriented helmet shoe which secures via a patented collar system and a bottom-oriented weapon shoe which affixes directly to the resident 1/4"- 20 standard receiver.

Either or both shoes may be used for obverse mounting on a single monocular or the kit may be split between separate monoculars. The matched height/offset of the shoes allows adaptability in several configurations.



SLIP-ON HELMET SHOE



BOLT-ON WEAPON SHOE



SLIDER ADJUSTMENT



ADJUSTABLE FITMENT TAB



# *D-COLLAR*

## Multi-Function Objective Stop Ring

***PN:111783***



A retrofit component for fielded legacy PVS-14 format monoculars, KVC M14 systems or new OEM builds, the D-Collar adds significant functional utility. Available in either aluminum or titanium (suggested for plastic housings), the D-Collar provides a rigid and protective centrifugal anchor point for various aftermarket accessories while providing crush resistance to the objective lens bore. The D-Collar's eccentric design also acts as an objective lens stop, eliminating any internal retention rings which disallow objective lens repair, cleaning or assembly ease. The D-Collar allows the removal, replacement and maintenance of the objective lens assemble without [typical] disassembly of the entire PVS-14 with an internal retention collar.



LEGACY COMPATIBILITY



TITANIUM/ALUMINUM OPTION



OBSOLETE LEGACY RETENTION



ORBITAL GRAB POINT



# PWM-S

## Parasitic Weapon Mount-Static

**PN:111785**



Providing a modular addition to the OEM/legacy PVS-14 weapon mount, the PWM-S conversion is a fast-attach/detach enhancement allowing shoe-based transitions from head-weapon needs. When partnered with dovetail type helmet/head-borne optics, the PWM-S enables various monoculars, magnifiers and imaging devices to transition without a screw-in decouple burden. The PWM-S positions supporting optics to the typical above-rail operational height for cooperative alignment while maintaining modular alignment. A reversible design allows various non-standard application and further use options.



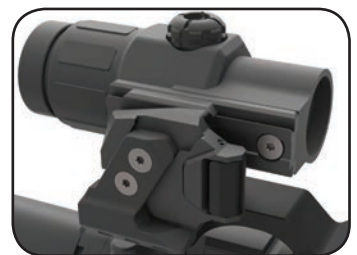
**PVS-14 WEAPON MOUNT  
ADAPTIVE**



**FAST ATTACH/DETACH**



**LATERAL MOUNT CONVERSION**



**SHOWN SUPPORTING 3X  
MAGNIFIER**





# HVM SHOE SET

DEP Hyper/Vyper Dovetail Conversion Adapter

**PN:111787**



HVM is a two-shoe kit that supports various non-OEM chassis systems as well as the KVC M14 modular monocular housing as a multi-sided dovetail interface. The top/helmet shoe affixes securely via anchor hardware for head-borne use, while the bottom/weapon shoe adapts to the legacy thread station. The kit may be divided between two separate monoculars. The HVM is not for use with typical/legacy upper monocular housings. See KVC OSS for adaptation options for legacy monocular devices.



TOP/HELMET SHOE



BOTTOM/WEAPON SHOE



FAST-ATTACH MODULARITY



ADJUSTABLE FITMENT TAB



# JAMR

## J-ARM Modular Replacement

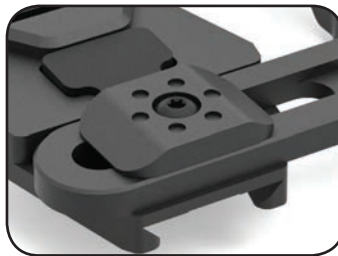
**PN:111789**



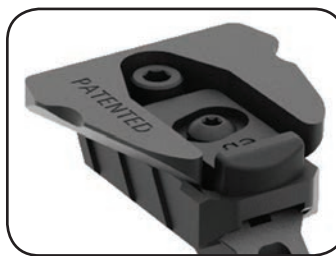
JAMR is a lightweight, bilateral, highly adaptive interface device which optimizes use of various image intensified, DVO, or digital systems. Compatible/adaptive to an expanding range of legacy electro-optic devices to include the PVS-14, MUM and various digital formats. Manufactured with materials to capitalize on weight/performance, to include titanium, 7075AL and polymers optimizing strength and reliability. The JAMR provides one-handed adjustments for multi-axis adjustments without typical eye-box position limitations. The JAMR extends adjustability, modularity, and utility beyond currently offered OEM products for both analog and digital imaging products.



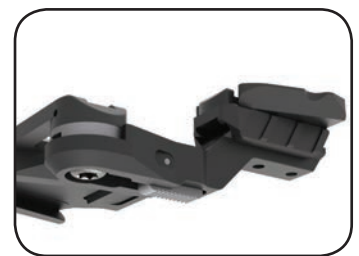
**TITANIUM ROTATIONAL  
JUNCTURE**



**ONE HANDED ADJUSTMENT/  
RELEASE**



**FORE/AFT STANDOFF  
ADJUSTMENT**



**TITANIUM RELEASE LEVER**



# K-CLIP SHOE SET

## Dovetail Conversion Adapter

**PN:111791**



K-Clips are intended for open source/universal type adaptation in which conversion from a legacy style MUM type interface plate is converted to a modern more versatile dovetail style receiver. The K-Clip adapts in seconds with no modification to the optical device. The use of a standard single point hex set screw secures the K-Clip firmly. Highly adaptive, the K-Clip set can be used individually as an opposing pair aboard one monocular, or as a set split between two monocular devices for side by side use. K-Clip sets include two (2) individual dovetail adapters, one offset left/one offset right. The K-Clips are designed as head borne adapter components. Although the K-Clips may absorb significant weapon shock the host optic anchor points may not suffice for such duties. Ensure your optic manufacturer has rated both your optic and interface point on your optic specific to your needs before use.



**EASY BI-DIRECTIONAL  
INSTALLATION/REMOVAL**



**LEGACY MUM  
CONVERSION**



**K-CLIP ADJUSTABLE TOOTH AND  
SET SCREW**



**1/4"-20 SET SCREW**



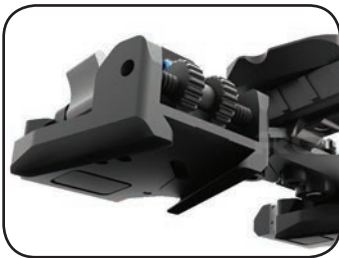
# UNIVERSAL BRIDGE

Universal Dual Optic Bridge

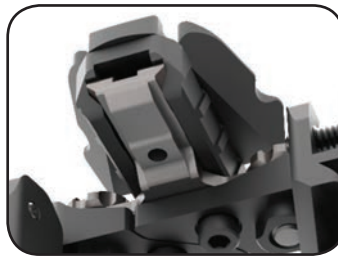
**PN:111793**



The Universal Bridge is a lightweight (96g), highly adaptive interface component for use with a variety of image intensified, DVO, or digital systems. Compatible/adaptive to a wide range of legacy electro-optic devices via common shoe-type interface, or modification adapter (PVS 14/MUM/MINI-NSEAS) hardware. Designed for a multitude of devices and mission options, single bridge allows use with the PVS-14, MUM, and other electro-optics systems. Via adaptive shoe-type components, convert to various devices in seconds. Exceeds all present manufacturers inter-pupillary adjustment, weight, and modularity at lesser cost than competing systems. Unique design allows for a variety of mixed type or like modules to be used either independently or in tandem. Extends adjustability and personal customization beyond any currently offered product with highly adaptive compatibility. Adjusts for helmet standoff, inter-pupillary distance, helmet mount drop, and helmet interface wobble adjustment.



DUAL IPD THUMB WHEELS



TITANIUM INTERSECTIONS



TITANIUM AXLE AND RELEASE



FORE / AFT ADJUSTMENT





# M-15 ALLOY CHASSIS

MUM Format Monolithic Housing Kit

**PN:113308**



The M15 ruggedized chassis upgrade from KVC is the lightest [50g] fully-metallic housing offered. The four-piece kit includes the lightweight M15 monocular housing, modular objective focus ring and custom formed gasket. All enhancement components are direct replacement for legacy plastic parts, with each component increasing strength and added modularity options with industry accessories. Manufactured from 7075 aluminum, the KVC M15 housing serves as an open sources anchor point for modularity and future enhancements. Designed as a foundation for mission/user scalability, the M15 provides logistic stability for training, use and maintenance. Matrix expansions can be implemented while significantly increasing environment resistance.



**RUGGEDIZED CHASSIS SYSTEM**



**LEGACY OPTICS UPGRADE**



**LEGACY ACCESSORY USE**



**FULL SYSTEM MODULARITY**



# M-14 ALLOY CHASSIS

Modular Interface Chassis

**PN:113037**



The M14 is an aluminum exoskeleton replacement for plastic legacy AN/PVS-14 format night vision monoculars. This metallic chassis provides 3 modular access points, protects the image tube, optical cells and lower monocular housing (battery module) with a rigid wall of 7075 material. The chassis is fully backwards compatible to legacy optics, accessories and OEM components. The chassis enhances environmental resistance, emersion and withstands significant abuse. Coupled with the KVC D Collar, the M14 provides a 3rd interface/anchor point while significantly increasing logistical ease and maintenance to the objective lens assembly. The M14 2 piece kit is typically provided by KVC as part of a monocular system.



OPEN SOURCE INTERFACE



MODULAR ACCESSORIES



RUGGEDIZED INTERFACE



LEGACY COMPATIBILITY

